

# VILLAGE ESTATES

93 Main Road, Sidcup, Kent DA14 6ND Tel: 0208 302 1002

[www.village-estates.com](http://www.village-estates.com)

Email: [sidcup@village-estates.com](mailto:sidcup@village-estates.com)



**SOUTH FACING GARDEN**

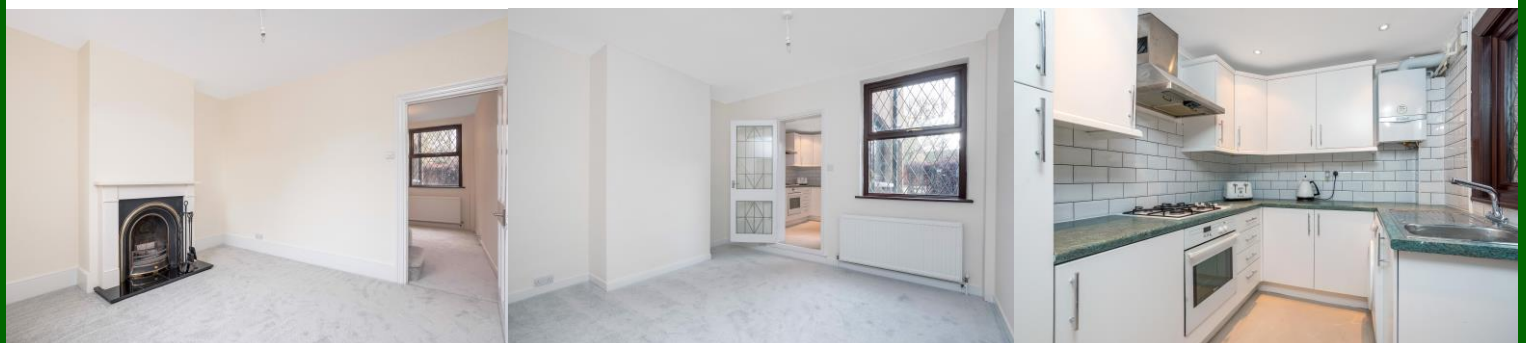
**LARGE MODERN SHOWER ROOM**

**NEUTRAL DECOR THROUGHOUT**

**TWO DOUBLE BEDROOMS**

**CHAIN FREE / VACANT**

**0.8 MILES > SIDCUP TRAIN STATION**



**52 Woodside Road**  
Sidcup, DA15 7JQ

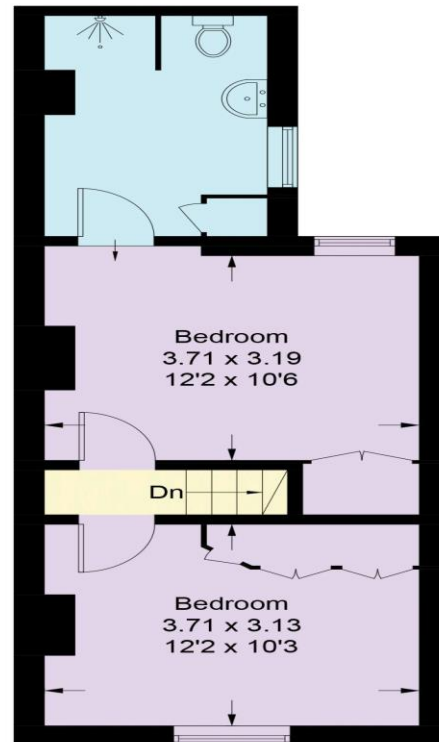
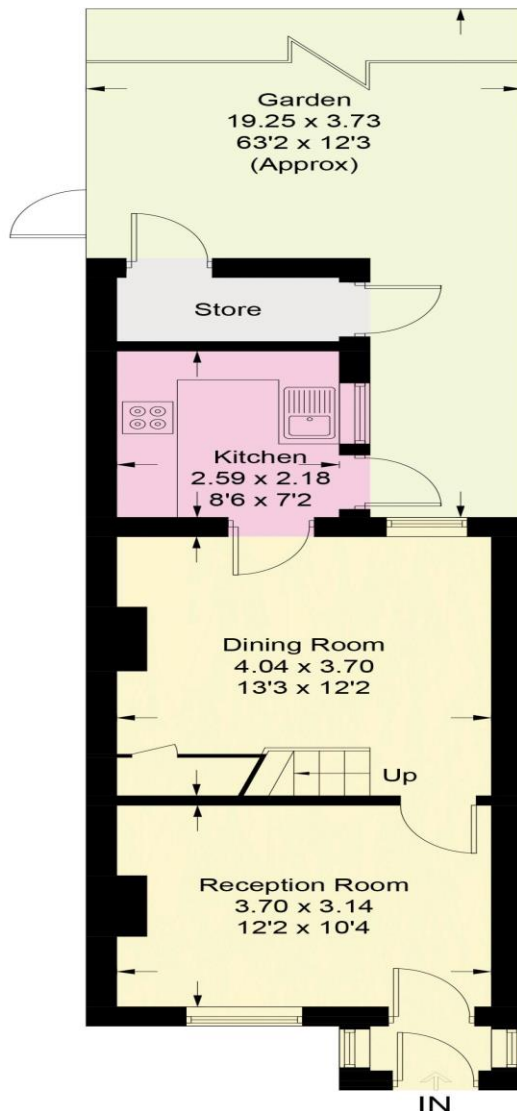
**Guide Price £350,000-£375,000**

**TWO DOUBLE BEDROOM Edwardian terrace house for sale close to SIDCUP MAINLINE TRAIN STATION and Longlands Primary school. Offered with NO FORWARD CHAIN, an excellent opportunity to acquire a period property ready to move straight into with neutral decor, a SOUTH FACING REAR GARDEN and situated in a desirable area near to Longlands Rec Park.**



**Woodside Road,  
DA15**

Approximate Gross Internal Area  
73.3 sq m / 789 sq ft



**CONSUMER PROTECTION FROM UNFAIR TRADING REGULATIONS 2008**

Please note that any services, heating system or appliances have not been tested, and no warranty can be given or implied as to their working order. You are advised to obtain verification from your solicitor or surveyor. References to the tenure of a property are based on information supplied by the seller. We have not had sight of the title documents and a buyer is advised to obtain verification from their solicitor. Items shown in photographs are not included unless specifically mentioned within the sales particulars, but may be available by separate negotiation. Whilst every attempt has been made to ensure the accuracy of the floor plan contained here, measurements of doors, windows, rooms and any other items are approximate and no responsibility is taken for any error, omission, or mis-statement. We advise you to book an appointment to view before embarking on any journey to see a property, and check its availability. The accuracy of these details are not guaranteed and they do not form part of the contract.